



The Expo Line

Speed · Comfort · Capacity



Alternative to I-10 traffic



Morning and afternoon



Expo Line (phase 1) – funded & starting construction!



From existing Blue Line



USC & Exposition Park



Crenshaw – Baldwin Hills

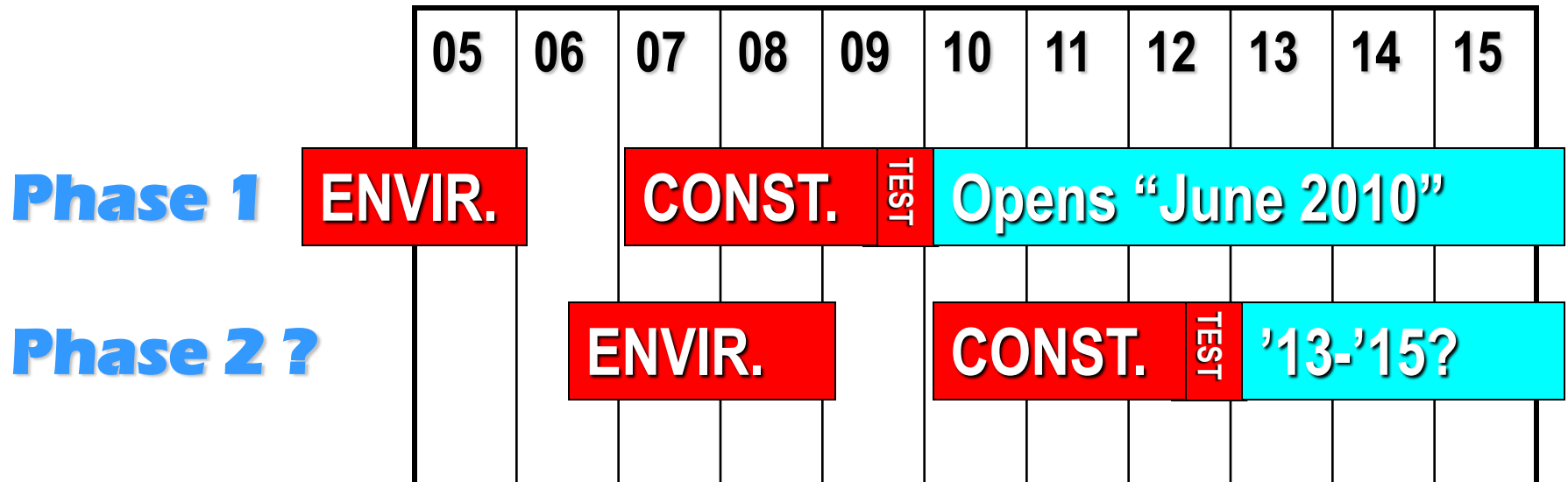


To Culver City

– Wesley St. interim terminus



On to phase 2 – aka Santa Monica Extension



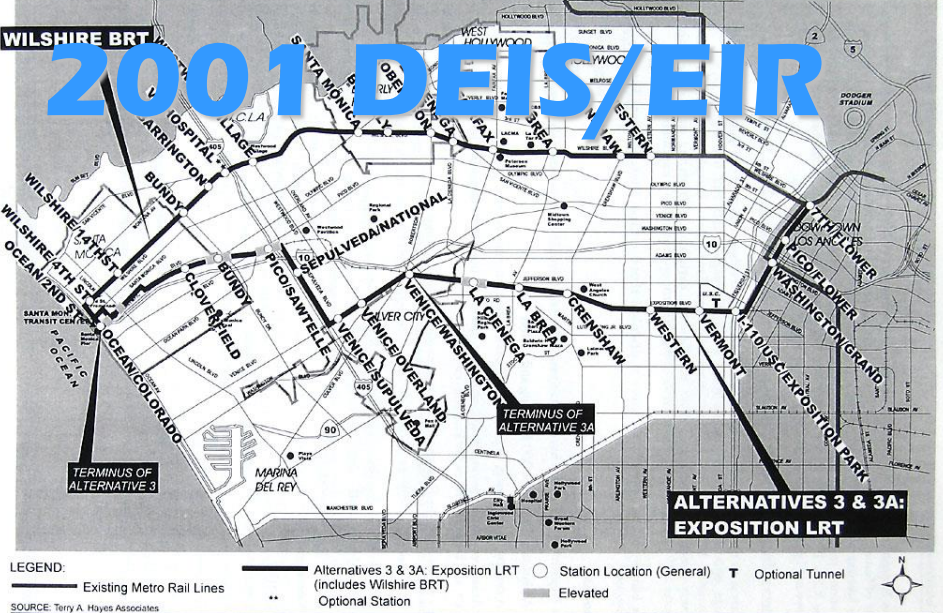
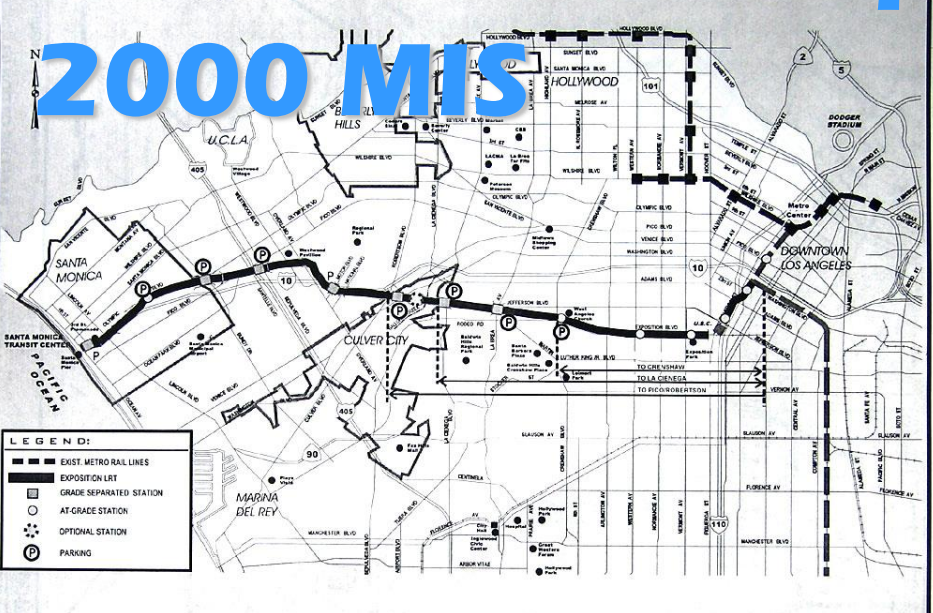
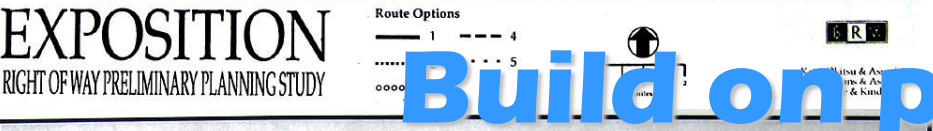
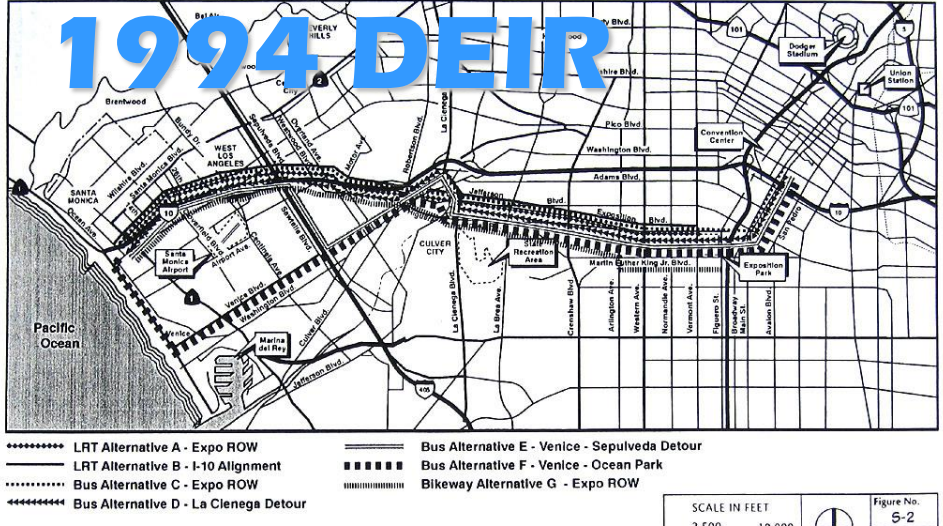
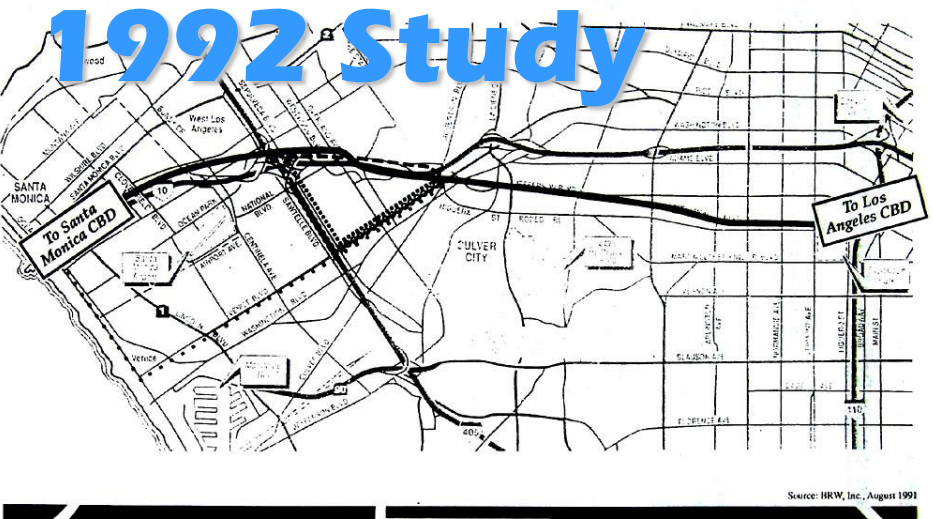
- Metro [MTA] budgeted \$15M Environmental
- Priority in draft 2006 LRTP
- Const. \$ from Nov. bonds, federal, or?



Our Expectations

- **Environmental study of all appropriate route options (which CEQA requires)**
- **Comprehensive engagement of neighboring communities in planning the route's details and mitigations**
- **Consistent design and mitigation along the whole line**
- **Our role – advocate for both the line and its communities in the planning and construction process**

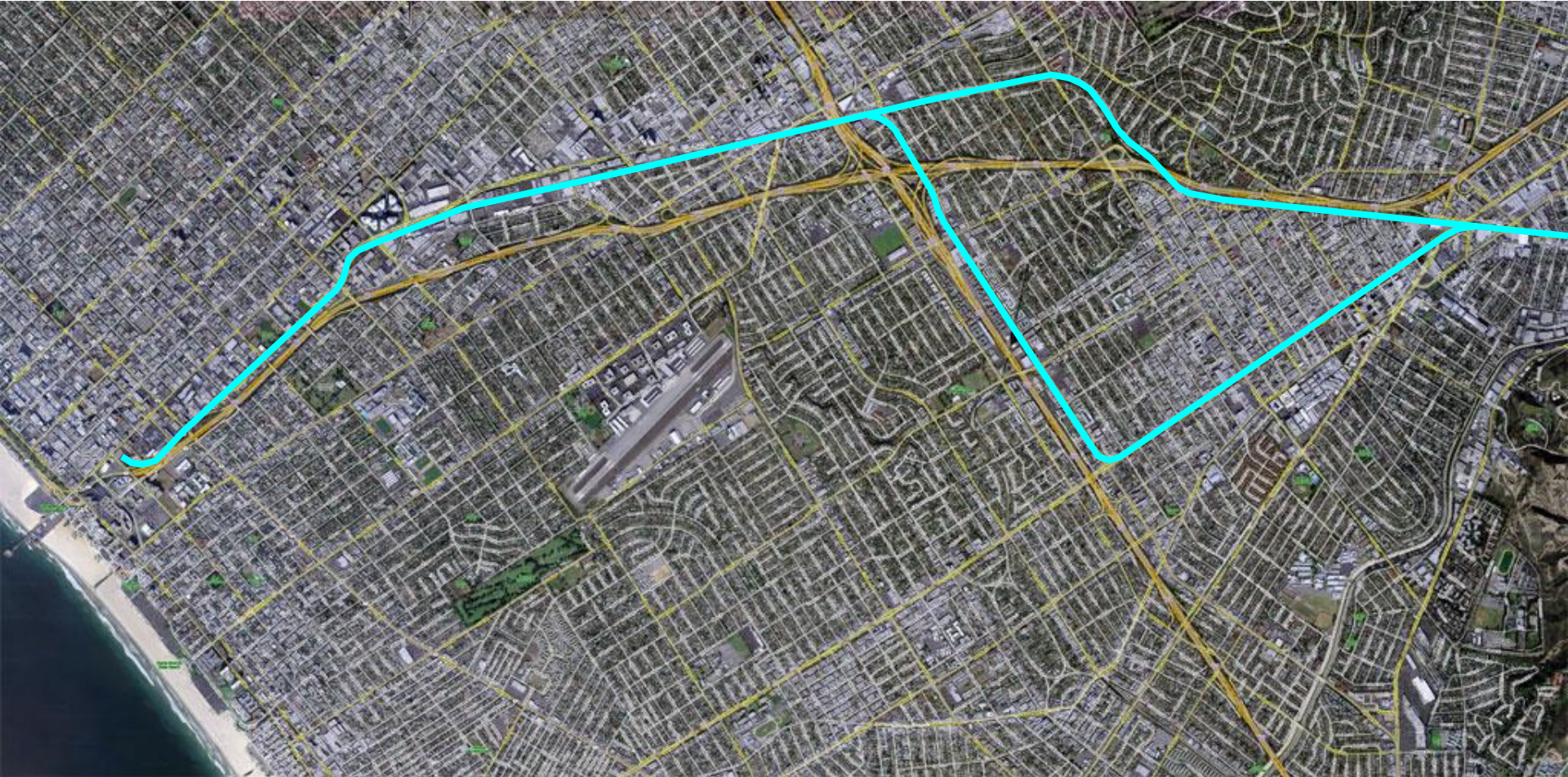
Corridor Study Routes - Exposition Branch
Figure 3-1

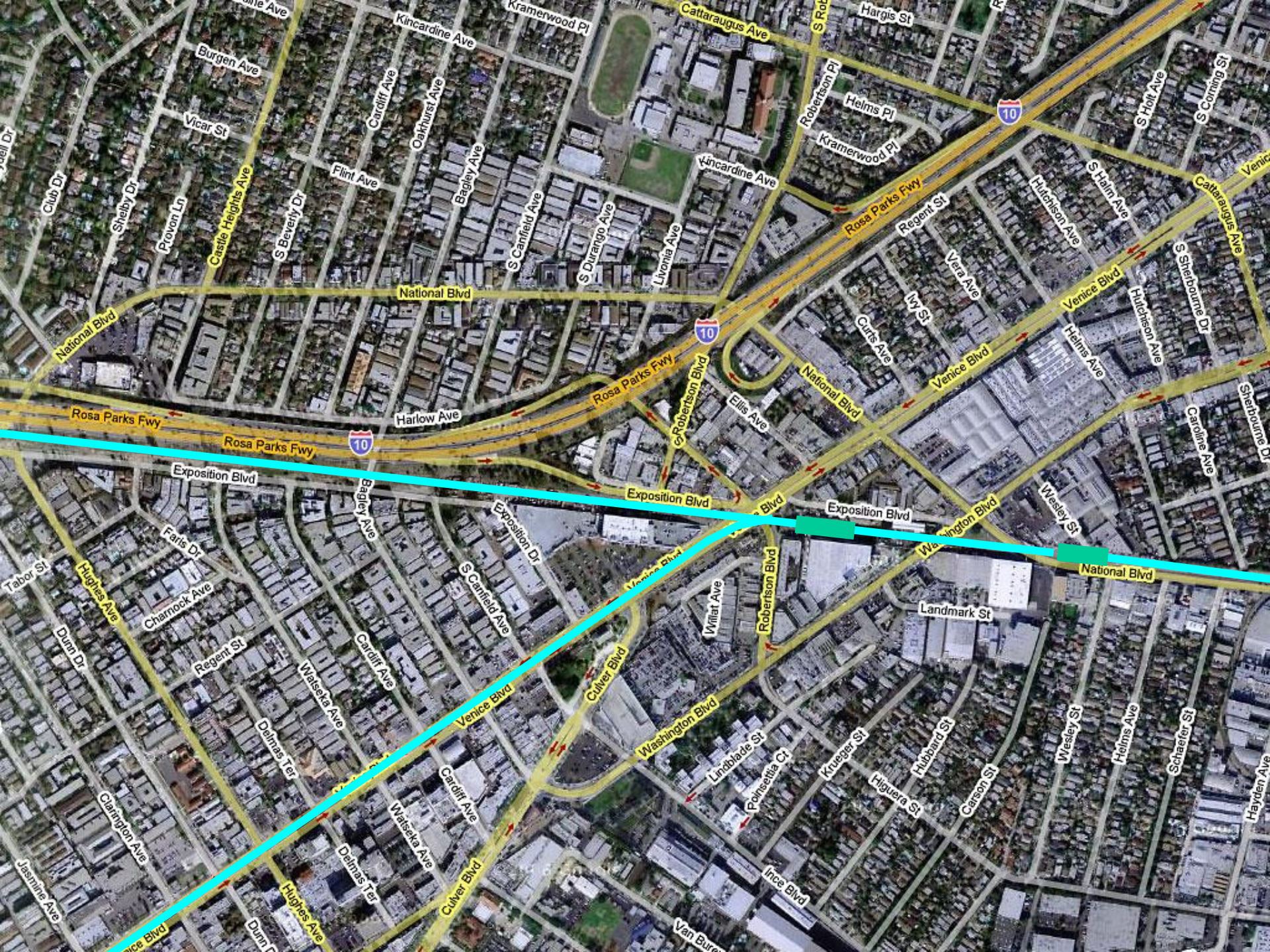


Mid-City/Westside Transit Corridor Re-Evaluation/Major Investment Study
Figure 2.18
ALTERNATIVE 3a
EXPOSITION LIGHT RAIL - TRANSIT (LRT)

Mid-City/Westside Transit Corridor
LOS ANGELES COUNTY METROPOLITAN TRANSPORTATION AUTHORITY
FIGURE 2-18
ALTERNATIVES 3 & 3A: EXPOSITION LRT

Expo Line phase 2





Future aerial Culver City station

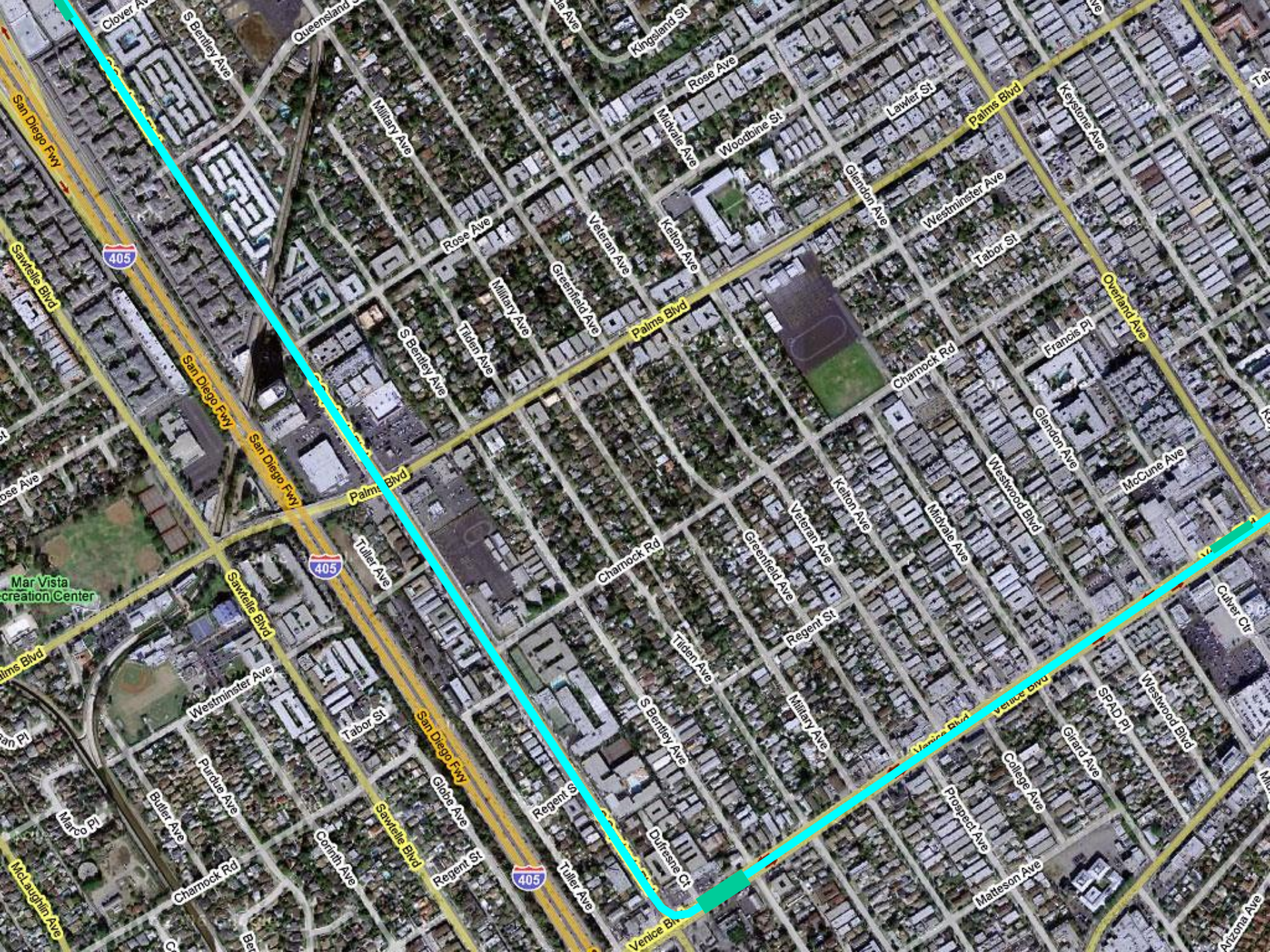


Bridge over Venice & Robertson traffic



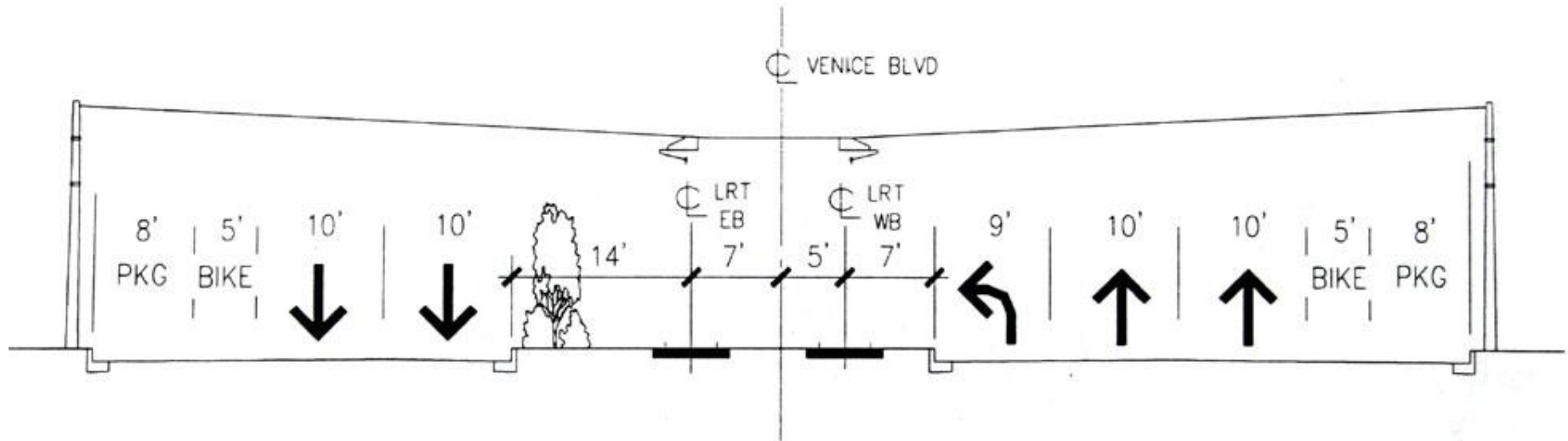
Freight trains until 1980s





Venice at Culver



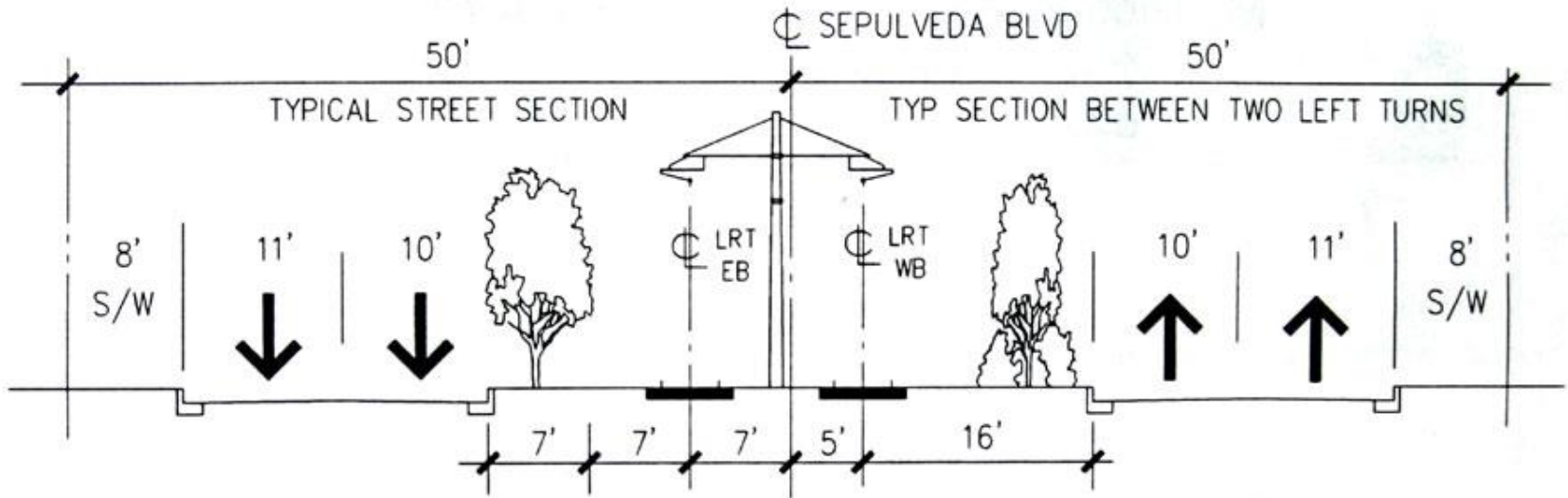


K. Venice Boulevard East of Watseka Avenue

Loss of 2 traffic lanes
– 2001 DEIS/EIR

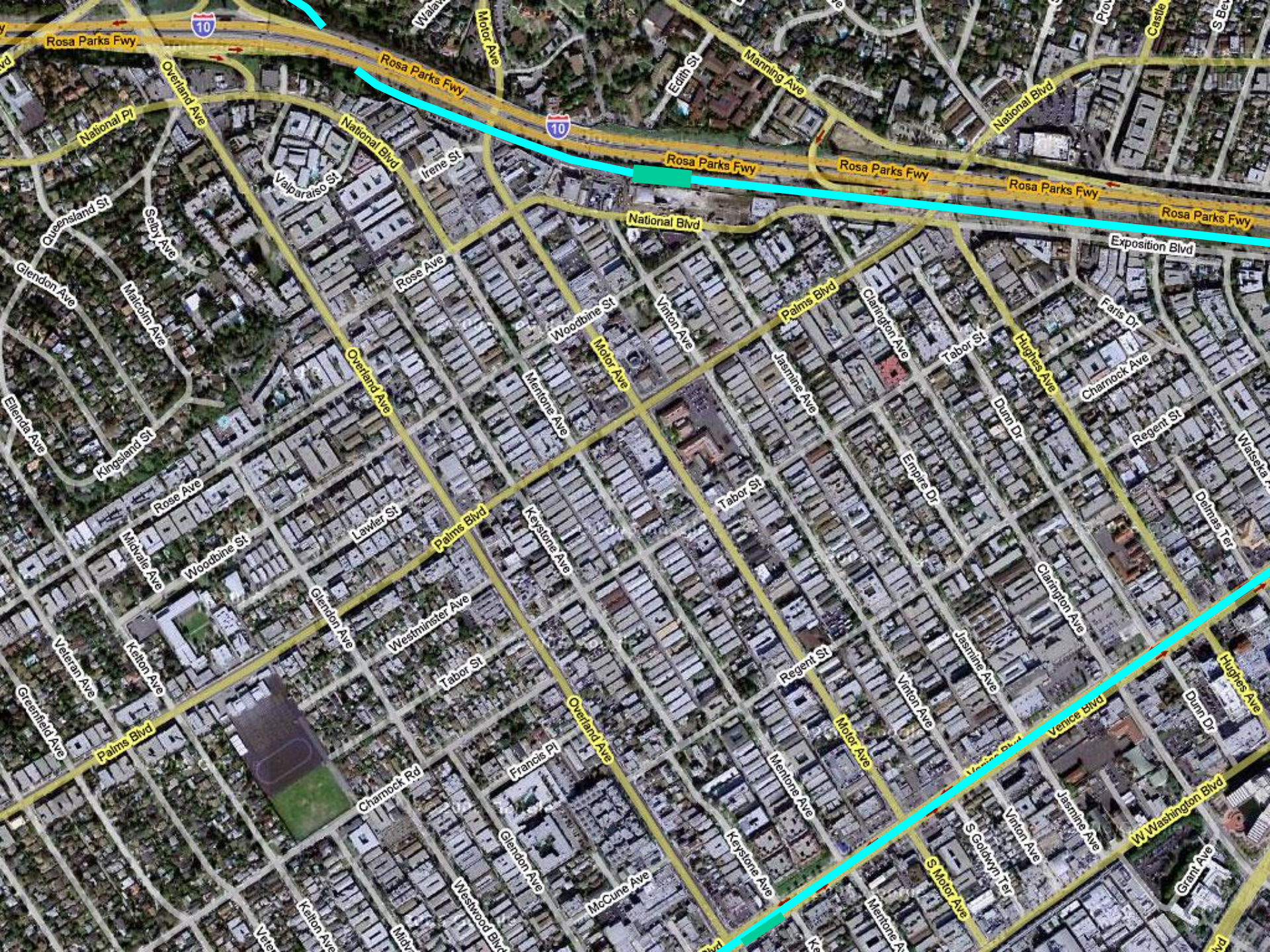
Venice & Sepulveda





L. Sepulveda Boulevard North of Rose Avenue

Loss of street trees & parking
– 2001 DEIS/EIR



Existing National bridge



Station at self-storage on National?



Historic Palms depot



Ralph Melching collection

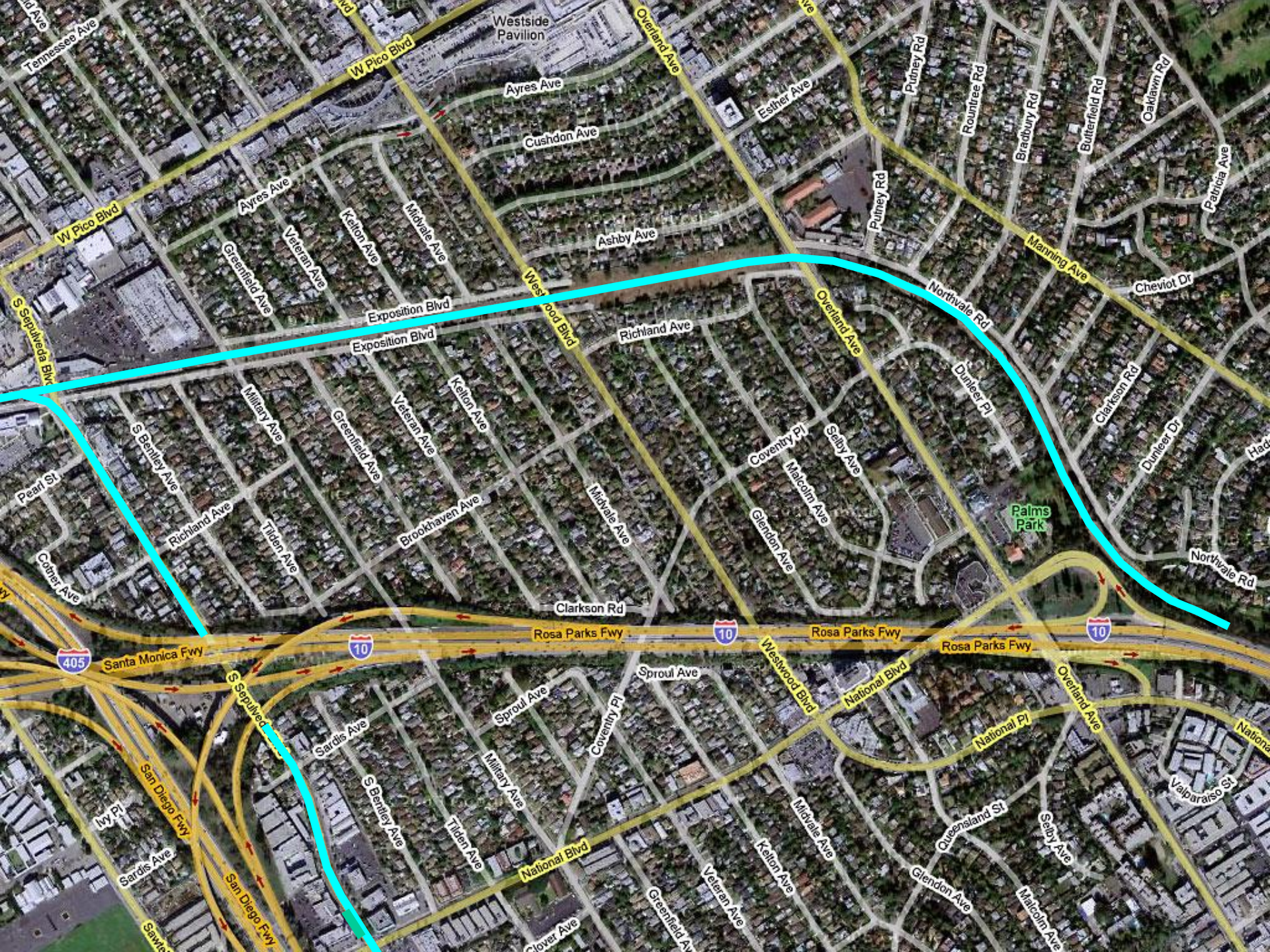
Bridge over Motor



Before the freeway



Ralph Melching collection



Westside Pavilion

Palms Park

405

10

10

10

Tennessee Ave

W Pico Blvd

W Pico Blvd

Ayres Ave

Cushdon Ave

Esther Ave

Ashby Ave

Westwood Blvd

Richland Ave

Exposition Blvd

Exposition Blvd

Overland Ave

Overland Ave

Manning Ave

Cheviot Dr

Pearl St

S Bentley Ave

Richard Ave

Cotner Ave

Military Ave

Greenfield Ave

Veteran Ave

Kelton Ave

Brookhaven Ave

Clarkson Rd

Rosa Parks Fwy

Rosa Parks Fwy

Rosa Parks Fwy

Northvale Rd

405

Santa Monica Fwy

S Sepulveda

Sardis Ave

Sproul Ave

Sproul Ave

Coventry Pl

Westwood Blvd

National Blvd

National Pl

Overland Ave

San Diego Fwy

San Diego Fwy

S Bentley Ave

Military Ave

Tilden Ave

National Blvd

Clover Ave

Greenfield Ave

Veteran Ave

Kelton Ave

Michale Ave

Queensland St

Glendon Ave

Selby Ave

Malcolm Ave

National

Valparaiso St

Trench between Cheviot Hills & freeway



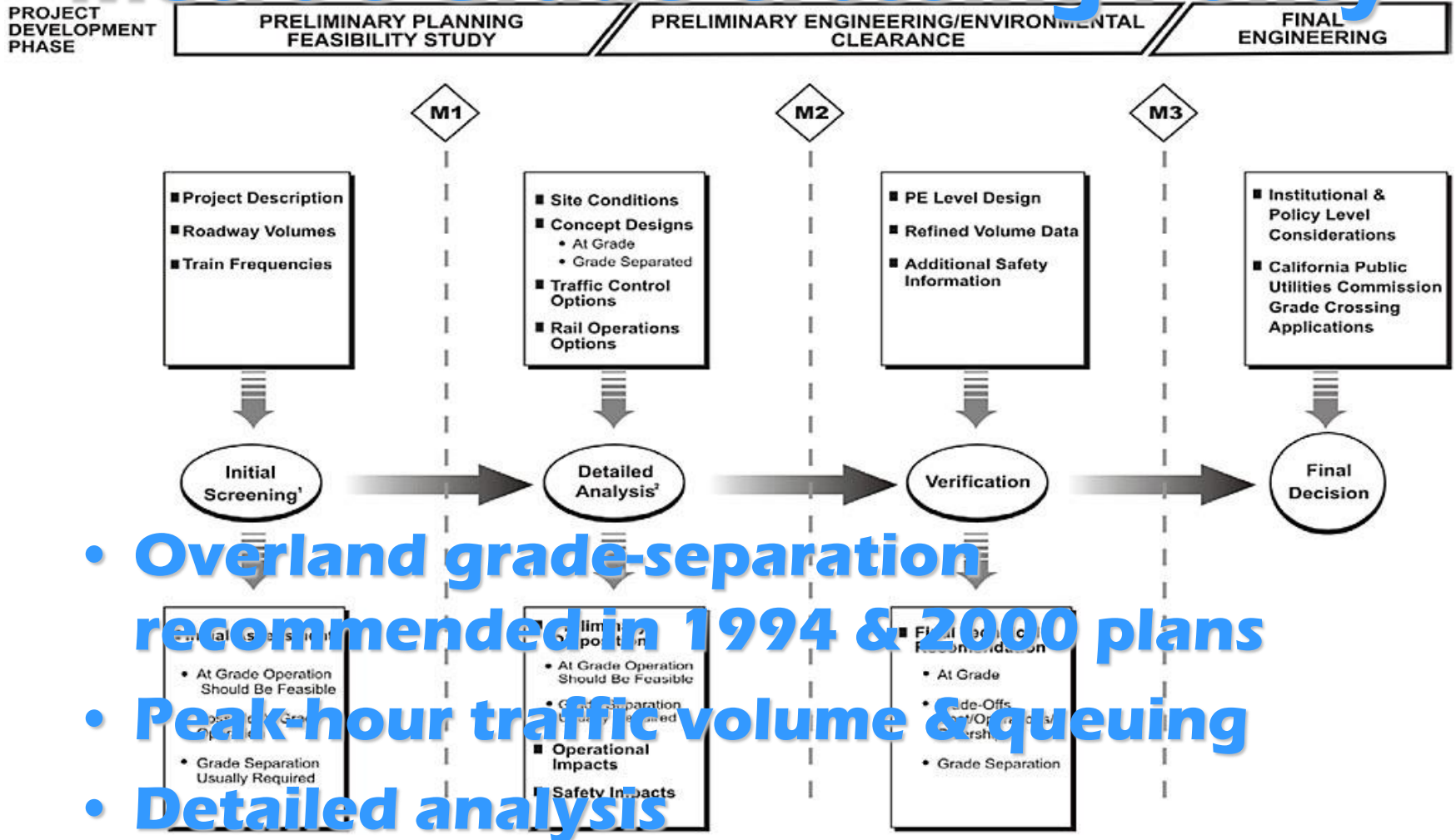
Before the freeway



Ralph Melching collection

Figure 1 – Light Rail Roadway Crossing Review Process

Metro's Grade Crossing Policy



¹ See Initial Screening Chart

M = Milestone

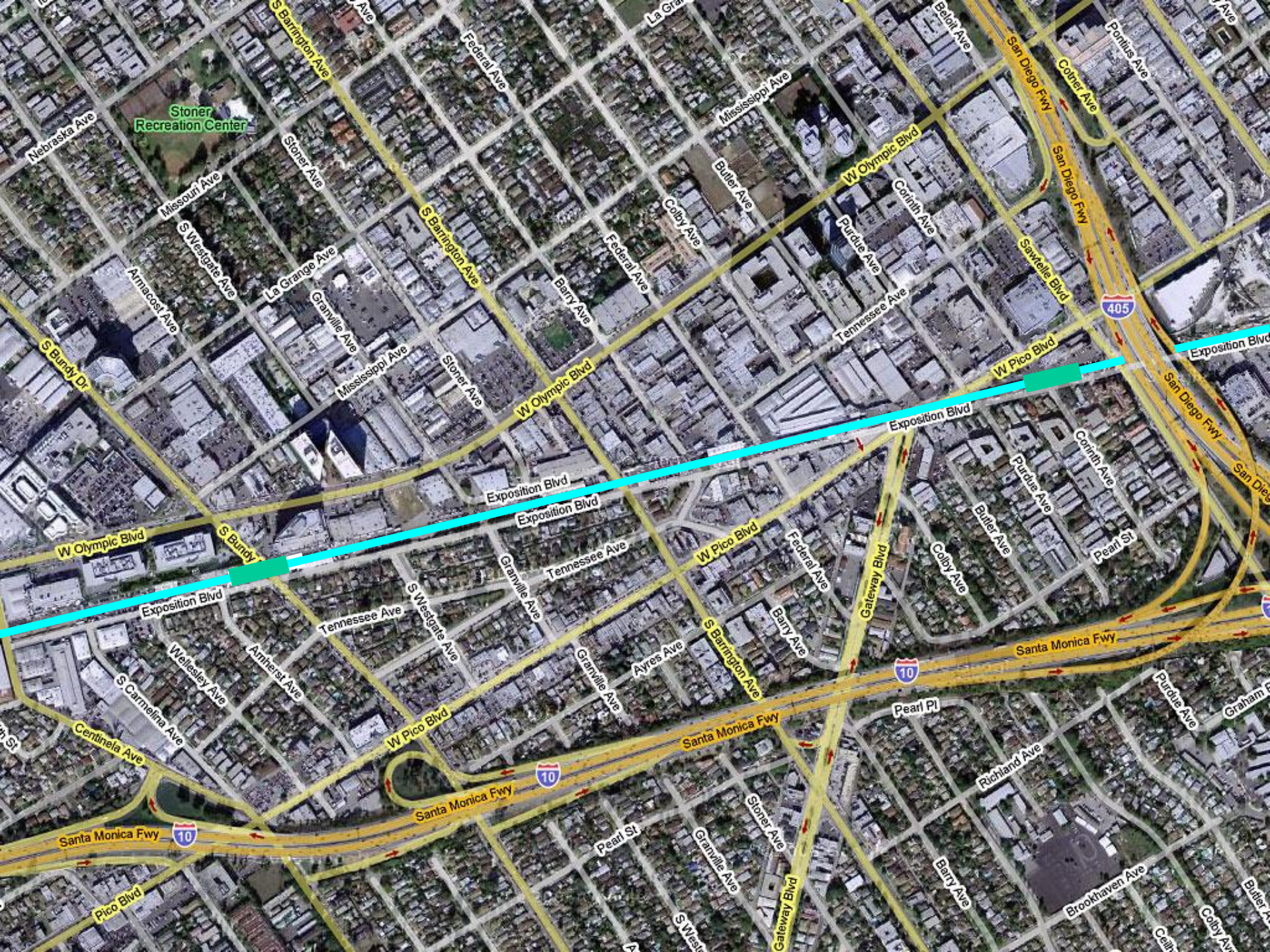
² See Detailed Analysis Flowchart

200' wide west of Overland



Compared to Gold Line





Stoner Recreation Center

Nebraska Ave

Missouri Ave

S Barrington Ave

Stoner Ave

Federal Ave

Mississippi Ave

Butler Ave

Coby Ave

Federal Ave

Barry Ave

W Olympic Blvd

Purdie Ave

Tennessee Ave

San Diego Fwy

Sawfells Blvd

405

Exposition Blvd

San Diego Fwy

San Diego Fwy

S Bundy Dr

Armacost Ave

S Westgate Ave

La Grange Ave

Granville Ave

Mississippi Ave

Stoner Ave

W Olympic Blvd

W Pico Blvd

Exposition Blvd

San Diego Fwy

Purdie Ave

Butler Ave

Coby Ave

Pearl St

W Olympic Blvd

S Bundy

Exposition Blvd

Exposition Blvd

W Pico Blvd

Federal Ave

Gateway Blvd

Coby Ave

Butler Ave

Exposition Blvd

Tennessee Ave

S Westgate Ave

Granville Ave

Tennessee Ave

Ayres Ave

S Barrington Ave

Barry Ave

10

Santa Monica Fwy

Purdie Ave

Graham St

Centinela Ave

S Carmelina Ave

Wellesley Ave

Amherst Ave

Tennessee Ave

W Pico Blvd

Granville Ave

Ayres Ave

Santa Monica Fwy

Barry Ave

Stoner Ave

Gateway Blvd

Pearl Pl

Richland Ave

Barry Ave

Brookhaven Ave

Purdie Ave

Graham St

Pico Blvd

Pearl St

S West

Barry Ave

Brookhaven Ave

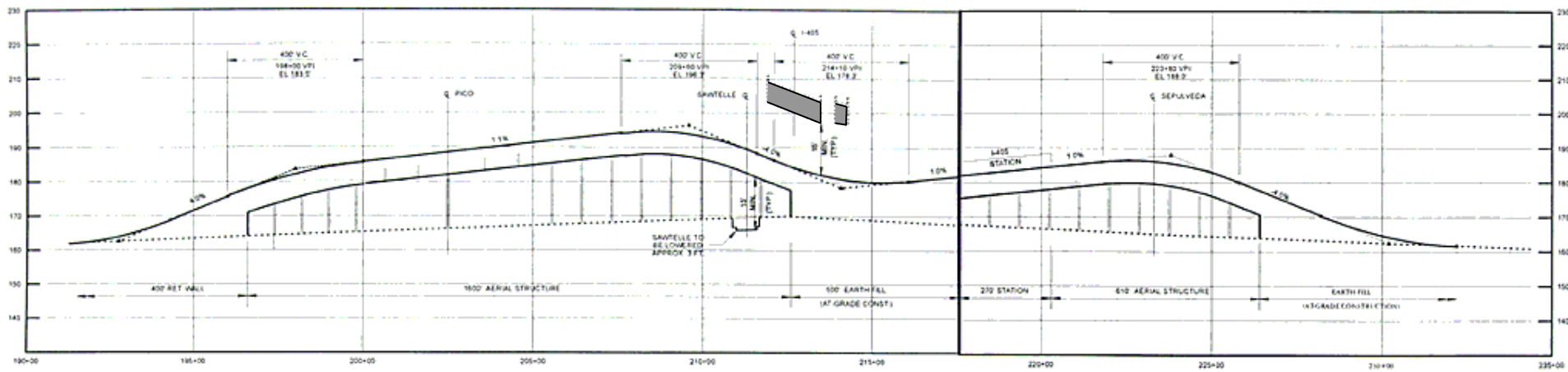
Butler Ave

Coby Ave

At I-405

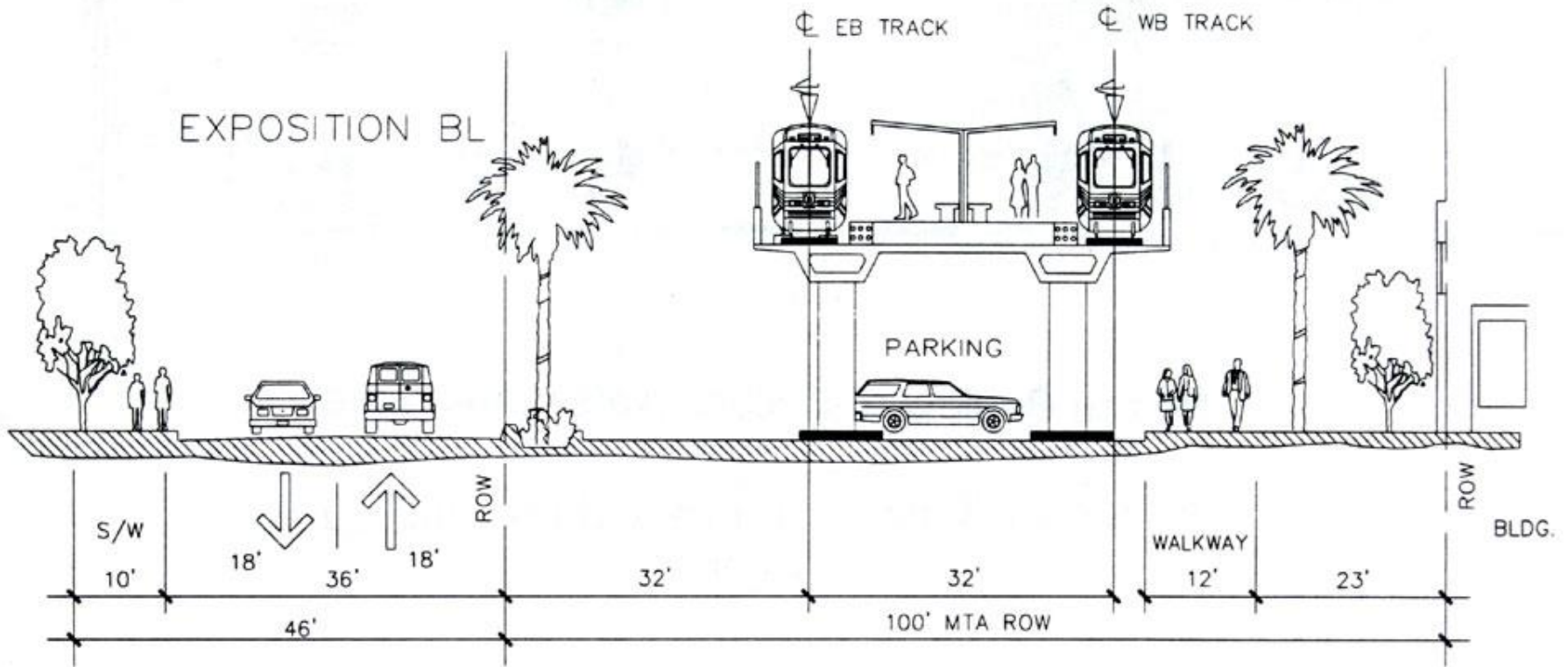


Bridge over Sepulveda, Sawtelle, Pico & under I-405 – 2000 MIS



Sawtelle & Pico station site



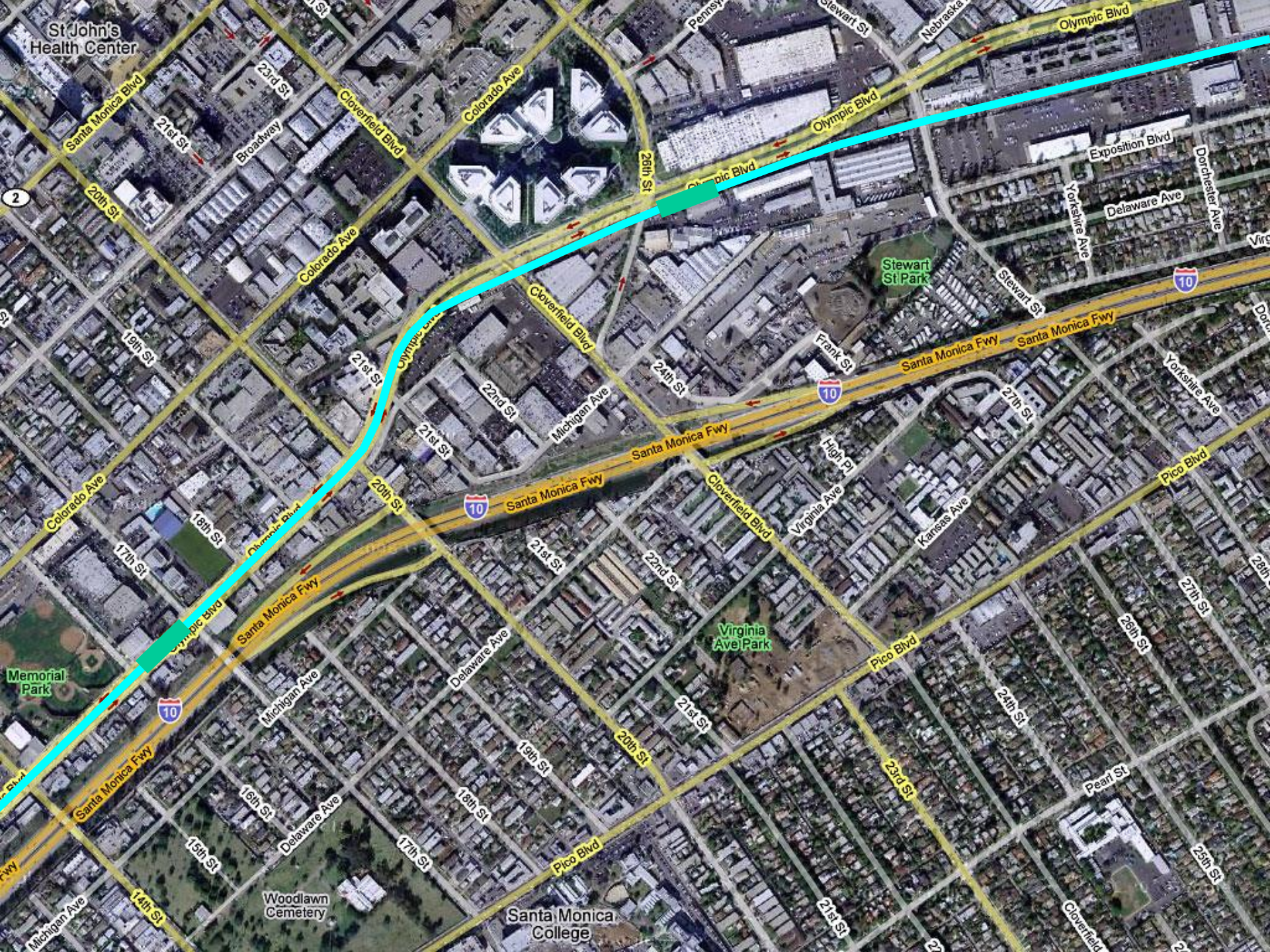


M. Pico/Sawtelle Station & Park & Ride
Facing West

Aerial station concept
– 2001 DEIS/EIR

Aerial station over Bundy traffic





St John's Health Center

Stewart St Park

Virginia Ave Park

Memorial Park

Woodlawn Cemetery

Santa Monica College

Santa Monica Blvd

21st St

Broadway

Cloverfield Blvd

Colorado Ave

26th St

Olympic Blvd

Exposition Blvd

Delaware Ave

Yorkshire Ave

Yorkshire Ave

Yorkshire Ave

27th St

26th St

25th St

24th St

20th St

19th St

18th St

17th St

20th St

21st St

22nd St

Cloverfield Blvd

24th St

Frank St

High Pl

Virginia Ave

Kansas Ave

Stewart St

Stewart St

10

Pico Blvd

Colorado Ave

18th St

17th St

20th St

21st St

22nd St

Michigan Ave

24th St

High Pl

Virginia Ave

Kansas Ave

Stewart St

Stewart St

10

Stewart St

10

Pico Blvd

Santa Monica Fwy

18th St

17th St

20th St

21st St

22nd St

Michigan Ave

24th St

High Pl

Virginia Ave

Kansas Ave

Stewart St

Stewart St

10

Stewart St

10

Pico Blvd

Santa Monica Fwy

15th St

14th St

17th St

18th St

19th St

20th St

21st St

22nd St

Michigan Ave

24th St

High Pl

Virginia Ave

Kansas Ave

Stewart St

Stewart St

10

Stewart St

10

Pico Blvd

Michigan Ave

14th St

15th St

17th St

18th St

19th St

20th St

21st St

22nd St

Michigan Ave

24th St

High Pl

Virginia Ave

Kansas Ave

Stewart St

Stewart St

10

Stewart St

10

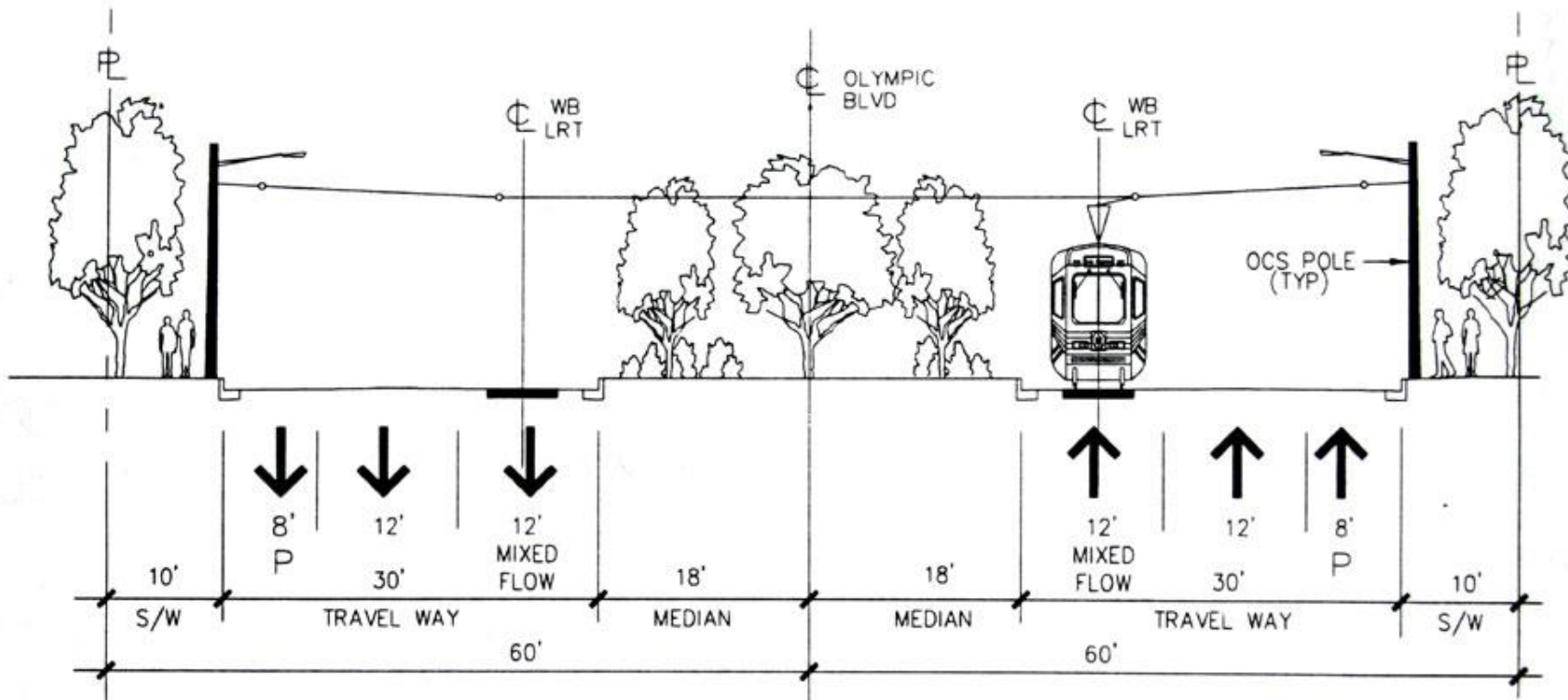
Pico Blvd

Cloverfield – Bergamot Station



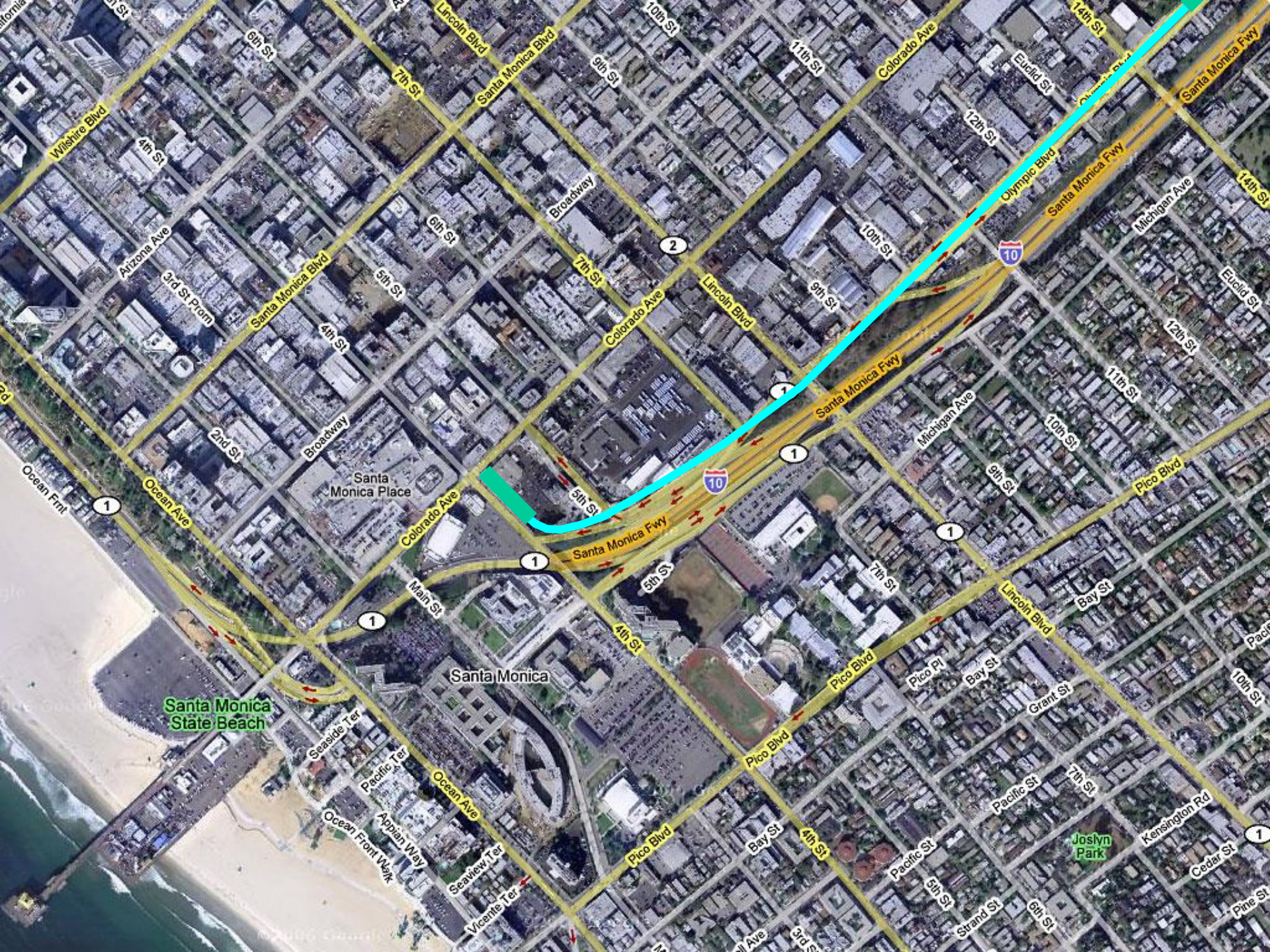
Olympic Blvd. median



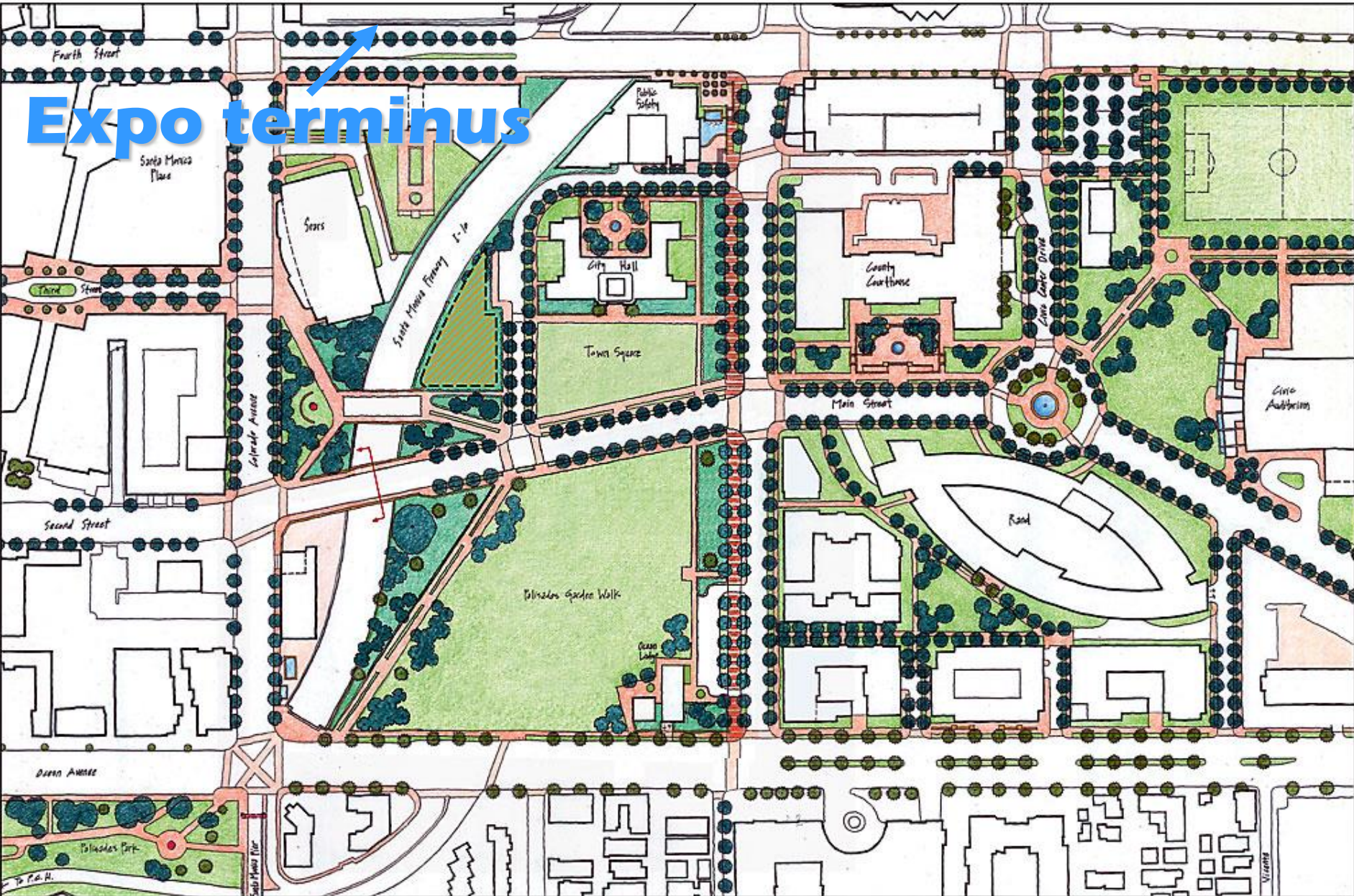


P. Olympic Boulevard West of 20th Street

Preserves coral trees
– 2001 DEIS/EIR



Expo terminus



CITY SERVICE BUILDING SITE

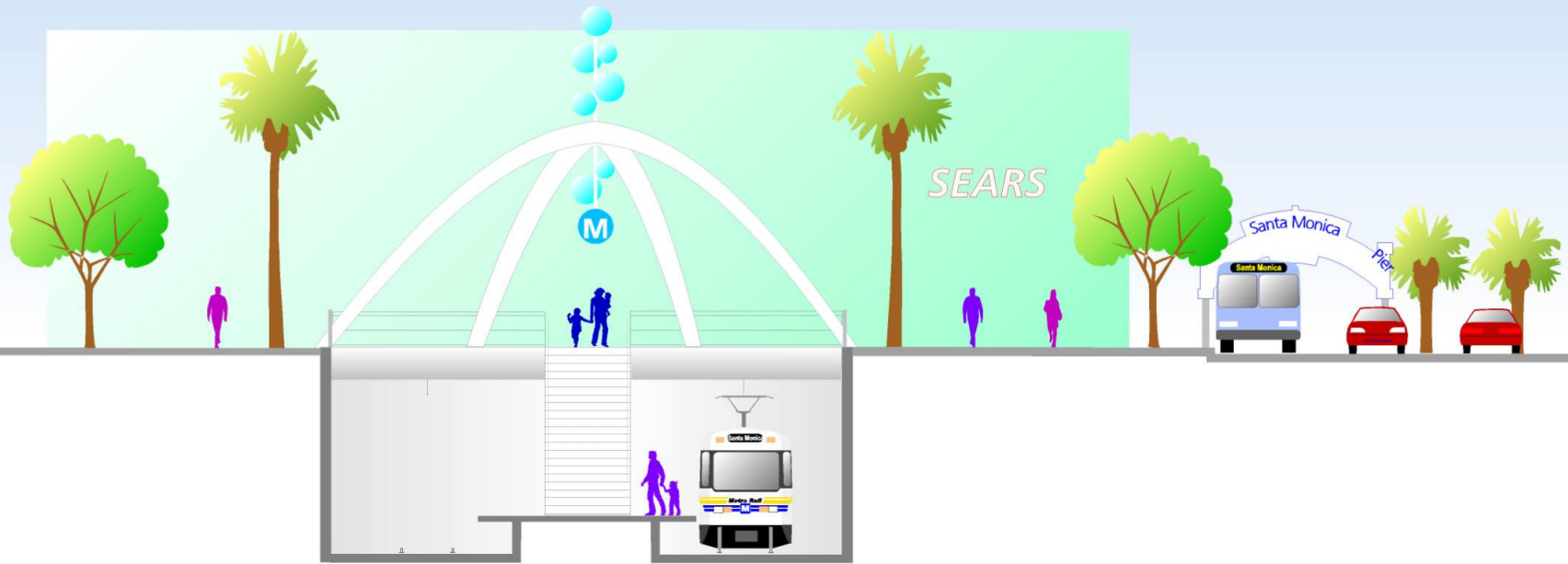
OPEN SPACE, SECOND STREET REALIGNMENT
Santa Monica Civic Center Specific Plan

Prepared for the City of Santa Monica by ROMA Design Group
MAY 4, 2005

Santa Monica terminus – Sears Auto Center



Station theme?



Third Street Promenade



Santa Monica Beach





The Expo Line

Speed · Comfort · Capacity

